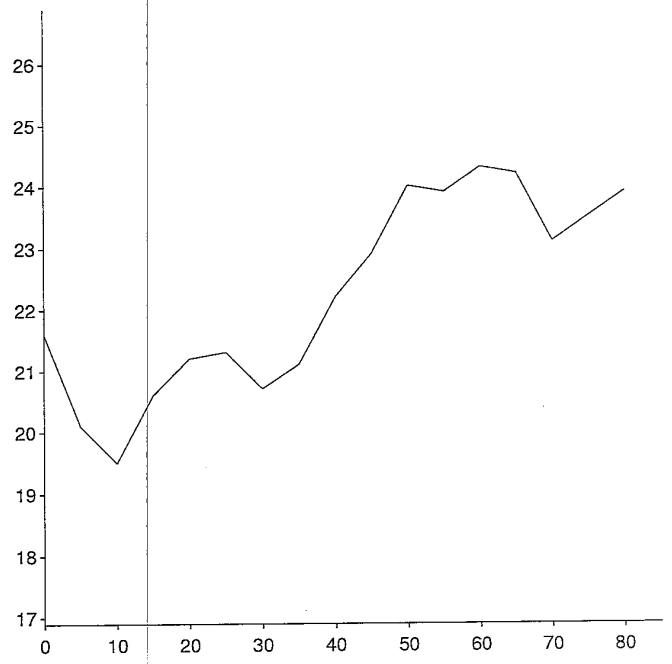
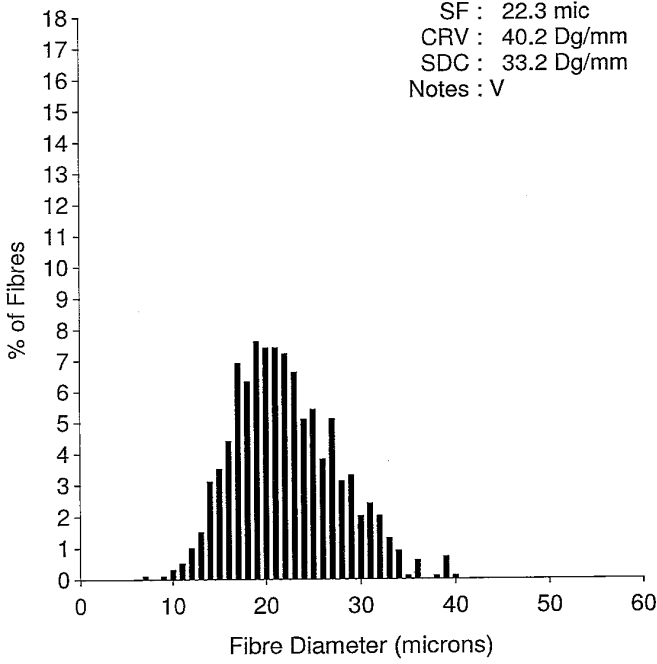


OFDA 2000 REPORT : SORTED BY EID/TAG

Samples 02/05/2019 (Trim High On) (153Records)

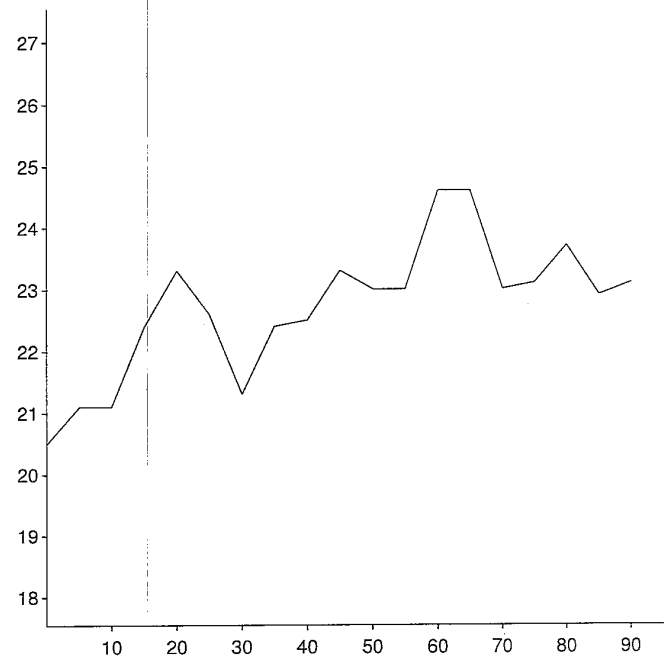
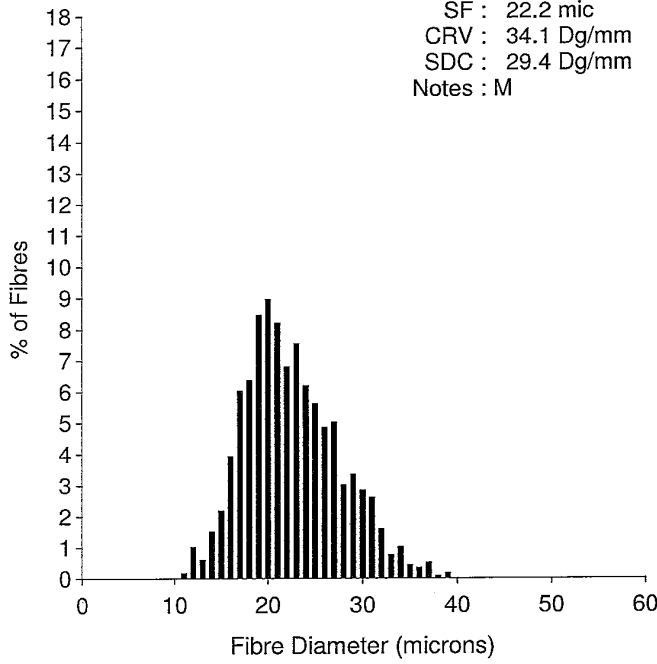
EID : Schoeckbli  
 EarTag : Best Ma B  
 Micron : 22.1 mic  
 SD : 5.5 mic  
 CVD : 24.9 %  
 CEM : 10.3 mic  
 <15 : 6.6 %  
 CF : 91.8 %  
 SF : 22.3 mic  
 CRV : 40.2 Dg/mm  
 SDC : 33.2 Dg/mm  
 Notes : V

Staple Len : 85.0 mm  
 Min Mic : 19.5 mic  
 Max Mic : 24.3 mic  
 SD Along : 1.60 mic



EID : Schoeckbli  
 EarTag : Best Ma B  
 Micron : 22.5 mic  
 SD : 5.0 mic  
 CVD : 22.3 %  
 CEM : 9.4 mic  
 <15 : 3.3 %  
 CF : 92.6 %  
 SF : 22.2 mic  
 CRV : 34.1 Dg/mm  
 SDC : 29.4 Dg/mm  
 Notes : M

Staple Len : 95.0 mm  
 Min Mic : 20.5 mic  
 Max Mic : 24.6 mic  
 SD Along : 1.10 mic



OFDA 2000 REPORT : SORTED BY EID/TAG

Samples 02/05/2019 (Trim High On) (153Records)

EID : Schoeckbli  
 EarTag : Best Ma B  
 Micron : 21.1 mic  
 SD : 4.4 mic  
 CVD : 20.8 %  
 CEM : 8.3 mic  
 <15 : 6.1 %  
 CF : 98.0 %  
 SF : 20.6 mic  
 CRV : 39.9 Dg/mm  
 SDC : 33.8 Dg/mm  
 Notes : H

Staple Len : 80.0 mm  
 Min Mic : 19.1 mic  
 Max Mic : 23.0 mic  
 SD Along : 1.30 mic

