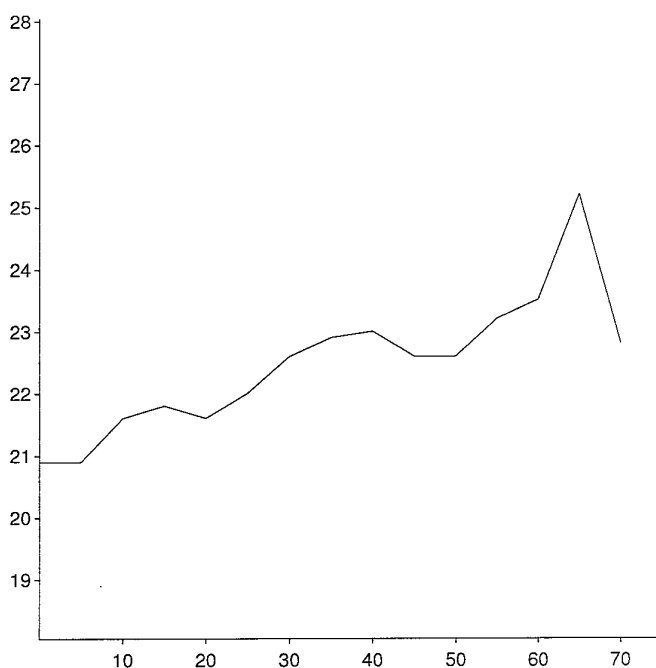
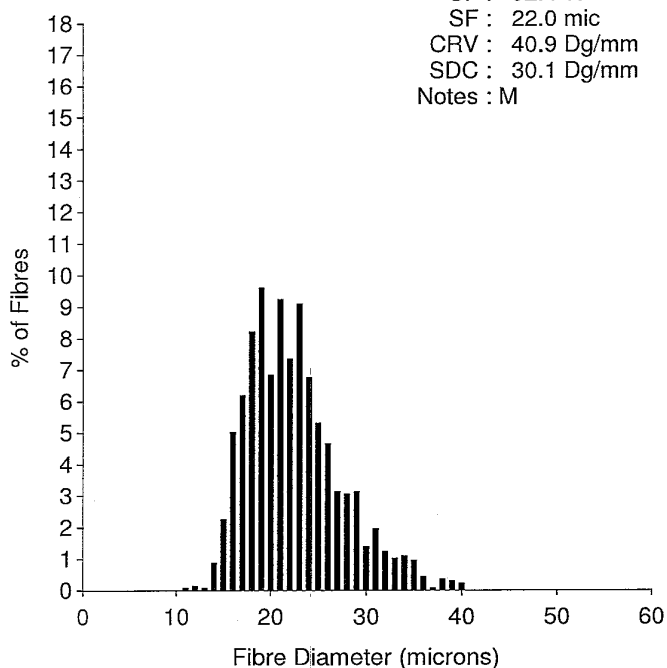


OFDA 2000 REPORT : SORTED BY EID/TAG

Samples 02/05/2019 (Trim High On) (153Records)

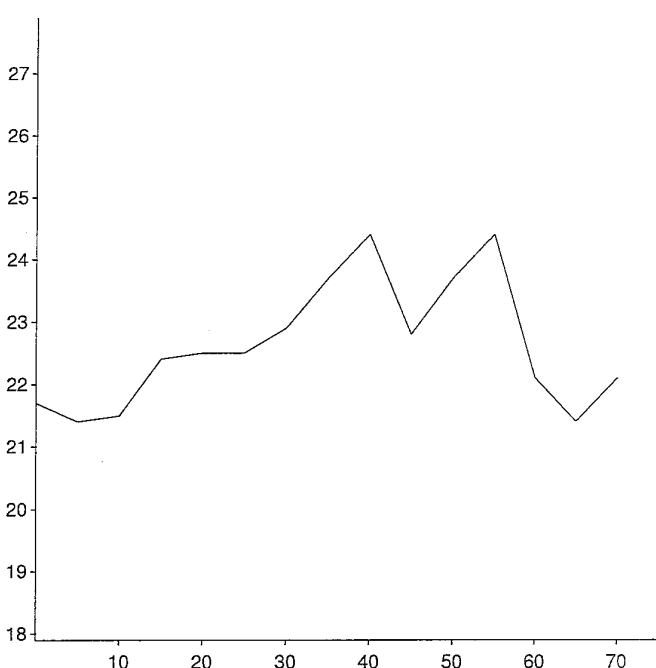
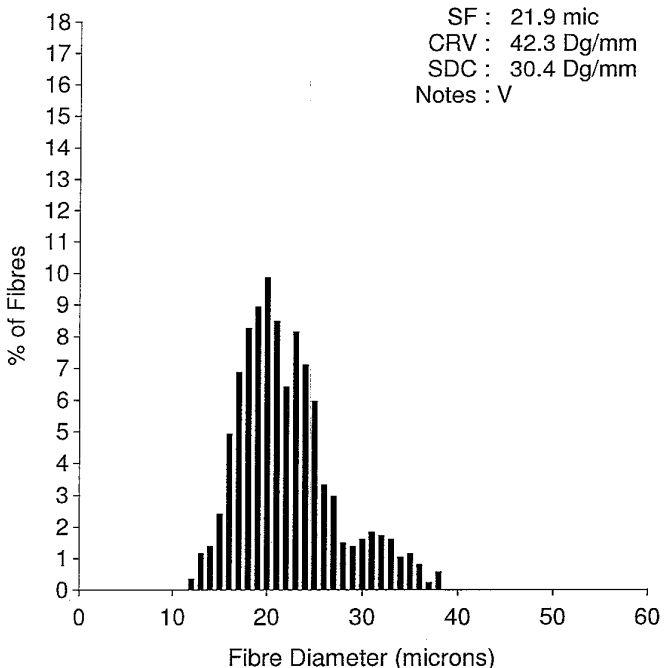
EID : Winter's A  
 EarTag : Milou  
 Micron : 22.4 mic  
 SD : 4.9 mic  
 CVD : 22.0 %  
 CEM : 10.1 mic  
 <15 : 1.2 %  
 CF : 92.4 %  
 SF : 22.0 mic  
 CRV : 40.9 Dg/mm  
 SDC : 30.1 Dg/mm  
 Notes : M

Staple Len : 75.0 mm  
 Min Mic : 20.9 mic  
 Max Mic : 25.2 mic  
 SD Along : 1.10 mic



EID : Winter's A  
 EarTag : Milou  
 Micron : 22.1 mic  
 SD : 5.1 mic  
 CVD : 23.1 %  
 CEM : 11.1 mic  
 <15 : 2.9 %  
 CF : 91.1 %  
 SF : 21.9 mic  
 CRV : 42.3 Dg/mm  
 SDC : 30.4 Dg/mm  
 Notes : V

Staple Len : 75.0 mm  
 Min Mic : 21.4 mic  
 Max Mic : 24.4 mic  
 SD Along : 1.00 mic



EID : Winter's A  
 EarTag : Milou  
 Micron : 23.0 mic  
 SD : 4.6 mic  
 CVD : 20.1 %  
 CEM : 9.3 mic  
 <15 : 0.6 %  
 CF : 92.3 %  
 SF : 22.2 mic  
 CRV : 43.2 Dg/mm  
 SDC : 34.6 Dg/mm  
 Notes : H

Staple Len : 50.0 mm  
 Min Mic : 21.5 mic  
 Max Mic : 23.8 mic  
 SD Along : 0.70 mic

